

OPERATOR'S
HANDBOOK**ENDURAMAXX[®]**
your choice**2M SPRAY BOOM 151050**FREEPHONE
0800
840
4030Outgang Road, Baston, PE6 9PT
www.enduramaxx.co.uk

READ YOUR OPERATOR'S HANDBOOK CAREFULLY BEFORE MOUNTING AND USING YOUR SPRAYER. KEEP YOUR HANDBOOK IN A SAFE PLACE.

Introduction

Congratulations on your purchase of a Enduramaxx Silver Series 2m Spray Boom which is complete and ready for use. The unit is ideally suited to small farmers for weed spraying, fence line spraying, spraying of drainage channels and around buildings etc.

Warnings

- 1.** When mounting to any vehicle ensure that you have read the Vehicle Owner's Manual and that you comply with all the weight restrictions as specified by the vehicle manufacturer, as overloading can cause injury or death.
Remember that 1 litre of water weighs 1 kilogram.
- 2.** To ensure your own safety and that of your employees if applicable you must comply with all relevant environmental, work place health and safety legislation and codes of practice.
- 3.** Select and wear appropriate Personal Protection Equipment in accordance with the label of the product you intend using and your own safe work practices.
- 4.** Care should be taken when spraying in windy conditions as spray drift may contaminate the air and may affect the operator or damage adjacent nontarget vegetation.
- 5.** Once the spraying operation has been completed, decontaminate the spray tank and spray accessories. Dispose of tank rinsing in compliance with current environmental, work place health and safety regulations.
- 6.** Personal Protection Equipment must still be worn while decontaminating your sprayer as per warning at 3 above.
- 7.** Improper or careless use of this sprayer can cause serious injury. Minors should never be allowed to use this sprayer. This sprayer should not be used when bystanders or animals are in the area. This sprayer should never be used while children are in the area.
- 8.** Never leave the sprayer unattended without turning off the line pressure, and flushing the sprayer of any harmful chemicals
- 9.** You must be in good mental health to operate this sprayer and not be under the influence of alcohol or any drugs that could impair your vision, physical strength, dexterity, judgement, or other mental capacity.



Calibration Procedures

The following table gives a step-by-step guidance on the standard method of sprayer calibration.

BOOM SPRAYERS HYDRAULIC NOZZLES		EXAMPLE
Read the LABEL	Spray VOLUME Product Dose Spray QUALITY	200 litres/hectare 50 litres/hectare Medium
Measure TIME per 100 Metres	Measure time in seconds over land similar to that to be sprayed	200 litres/hectare 50 litres/hectare Medium
Calculate SPEED	$\text{SPEED} = 360 \text{ divided by } \frac{\text{TIME}}{\text{seconds}}$ Km/h	$360 / 41.9 = 8.6 \text{ m/h}$
Measure nozzle SPACING	Normally 0.5 metres (50cm)	0.5 metre
Measure TIME per 100 Metres	$\text{OUTPUT} = \text{VOLUME} \times \text{SPEED} \times \text{SPACE} \times \text{SPACE} \div 600$ Litres/min litres/hectare km/h metre	0.5 metre
Select NOZZLE	Refer to nozzle manufacturers data charts or other sources and select the size and type of nozzle that will produce the calculated OUTPUT and required spray QUALITY	41.9 seconds
NOW, CHECK THE CALIBRATION ON THE SPRAYER		
Check Nozzle OUTPUT	With water, check outputs of 4 or more nozzles using a calibrated jug or flow meter. Check all nuzzles are aligned correctly and spray patterns are good	Average output =41.9 litres/minute
Calibrate SPRAYER	$\text{SPEED} = 360 \text{ divided by } \frac{\text{TIME}}{\text{seconds}}$ Km/h	$1.40 \times 600 \div 0.5 \div 8.6$
As the nozzle output and therefore the spray volume are less than target figures, increase the pressure to, say 2.5 bar and repeat the calibration to achieve 200 litres/hectares		

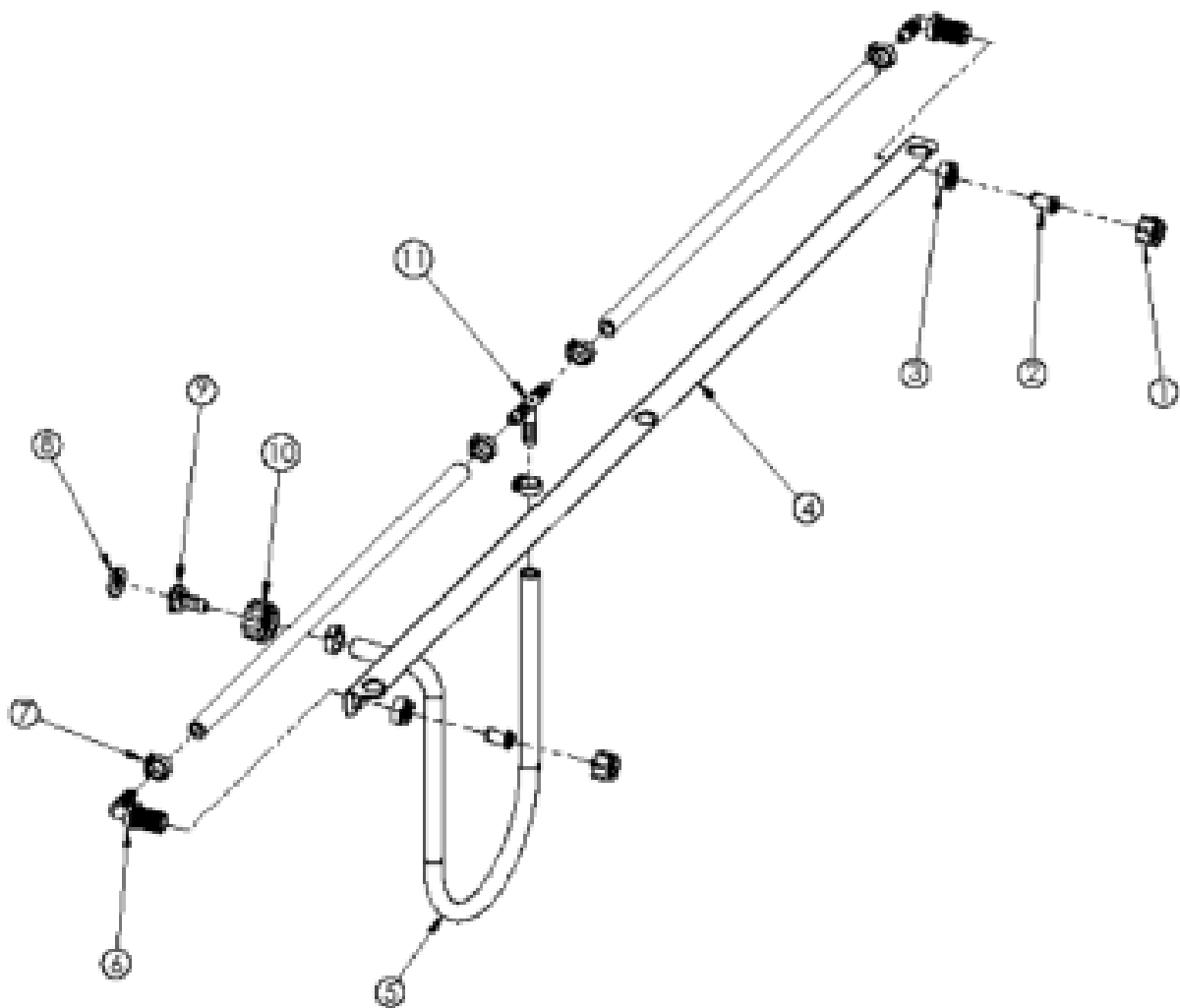


Spray Rate Application Chart

Litres per Hectare – 100cm Spacing								
123004 Red								
l/ha (nozzle spacing: 100 cm)								
Code	bar	l/min	6 km/h	8 km/h	10 km/h	12 km/h	14 km/h	16 km/h
	1	0.88	88	66	53	44	38	33
	1.5	1.08	108	81	65	54	47	41
	2	1.25	125	94	75	63	55	47
	3	1.53	153	115	92	76	66	58
123006 Brown								
l/ha (nozzle spacing: 100 cm)								
Code	bar	l/min	6 km/h	8 km/h	10 km/h	12 km/h	14 km/h	16 km/h
	1	1.13	113	85	68	56	49	43
	1.5	1.39	139	104	83	70	60	52
	2	1.60	160	120	96	80	69	60
	3	1.96	196	147	118	98	84	74
123008 Grey								
l/ha (nozzle spacing: 100 cm)								
Code	bar	l/min	6 km/h	8 km/h	10 km/h	12 km/h	14 km/h	16 km/h
	1	1.41	141	106	85	71	61	53
	1.5	1.73	173	130	104	86	74	65
	2	2.00	200	150	120	100	86	75
	3	2.45	245	184	147	122	105	92
All L/Ha calculations above are per nozzle								



Exploding Diagram 2m Spray Boom



Item #	Part Number	Quantity	Quantity
1	137092	2	Nozzle Nut
2	137094	2	Nozzle strainer, 50 mesh
3	137090	2	Nozzle body retaining nut
4	198210	1	Boom, 7' (2m)
5			
6	137088	2	Nozzle body, elbow, 3/8" HB
7	135040	6	Snapper hose clamp
8	137081	1	Black Vinyl Washer
9	137082	1	Flat seat 3/8" hose barb
10	137096	1	Swivel Nut
11	137068	1	Tee, 3/8" HB
12	123008	2	Nozzle



Sprayer Decontamination and Maintenance

1. After use, the sprayer must be thoroughly decontaminated, inside and outside – including pump, hoses, boom and hand lance- to avoid damage to crops from harmful spray residues. Decontamination prevents sprayer corrosion and abrasion. As a guide follow the decontamination procedure below.

After spraying, rinse out the tank with several changes of water plus a recommended cleaning fluid, brushing the inside of the tank.

Nozzles, nozzle filters, nozzle caps and gaskets should be cleaned by soaking in water, brushing with a nozzle brush and allowed to dry. Never blow through the nozzles with your mouth, or use wire or pins to clear any blockages. When re assembling ensure that the nozzle cap gasket is correctly positioned.

2. When storing the sprayer ensure that it is clean and dry and kept in a ventilated place.

Whilst every care has been taken in the preparation of these instructions, no liabilities can be accepted with regard to errors or omissions. Product specifications are subject to change in line with our commitment to continuous improvement.