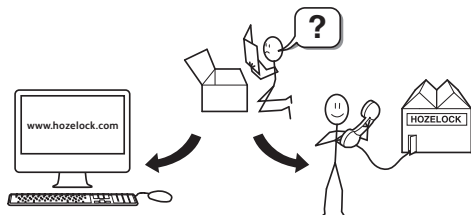


HOZELOCK

7922

Patio Cleaner



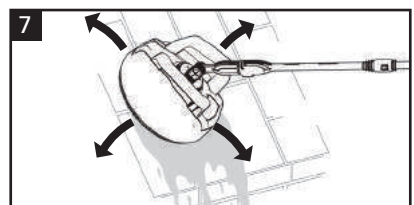
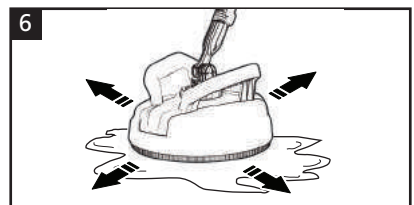
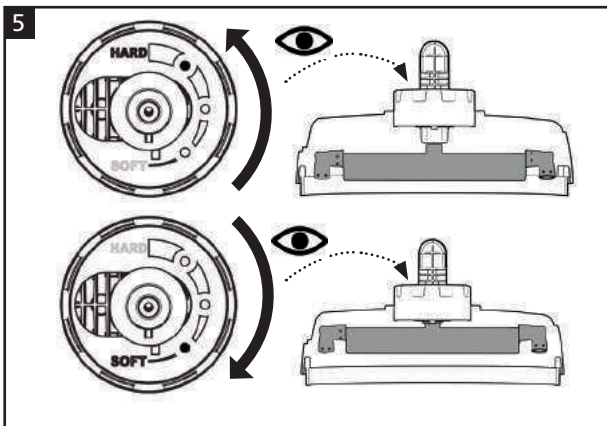
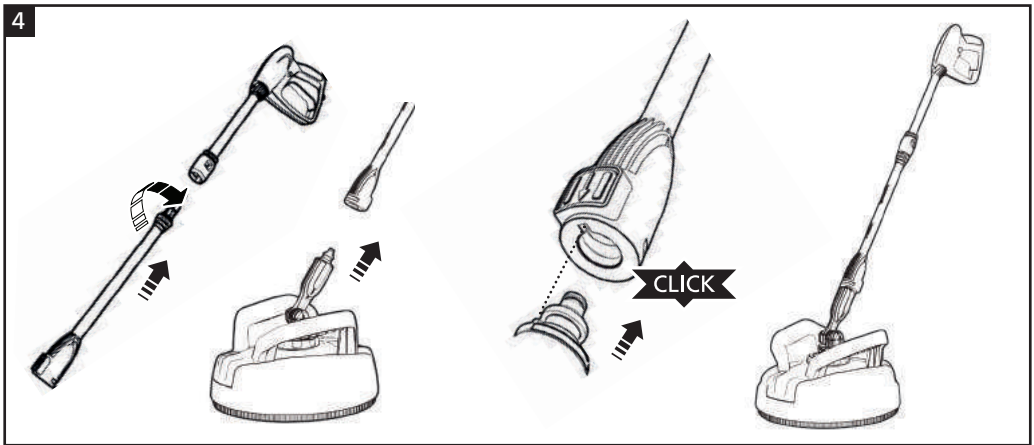
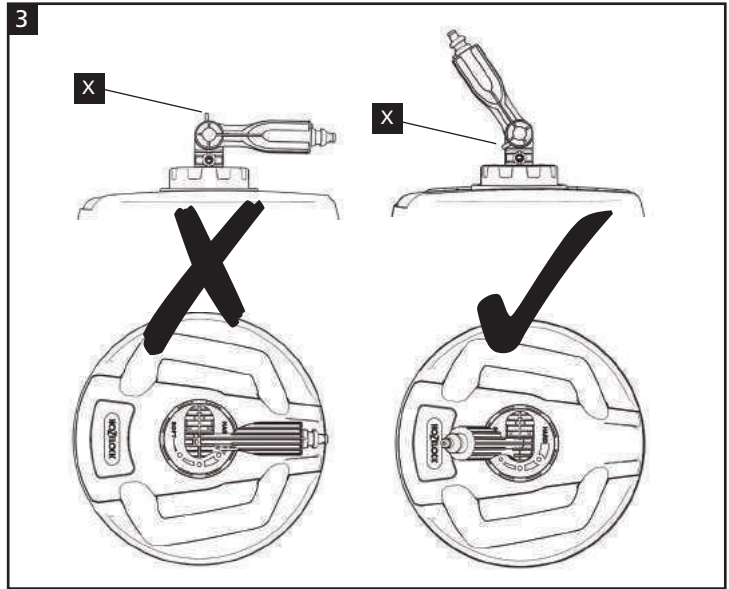
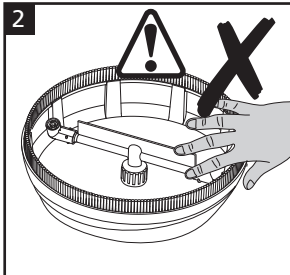
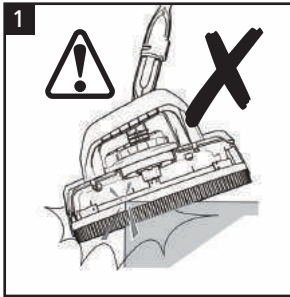
Hozelock Ltd.
Midpoint Park, Birmingham,
B76 1AB, England
Tel: 01702 482 760

www.hozelock.com

33610-000

2

Year guarantee
Ans de garantie
Jahre garantie
Jaar garantie
Años de garantía
Χρόνια εγγύηση



Contents

- Instruction Booklet
- Patio Cleaner

General Information



CAUTION – Read these instructions carefully before using this product and keep in a safe place for future reference.



This product is intended for domestic use (non-professional) use only.

Disposing of packaging

- Please dispose of all packaging in an environmentally responsible way.

Safety signs

- Comply with the instructions provided by the safety signs fitted to the appliance. Check that they are present and legible; otherwise, fit replacements in the original positions.

Safety Rules



FOLLOW ALL SAFETY RULES DETAILED IN YOUR PRESSURE WASHER INSTRUCTION MANUAL.



DO NOT OPERATE THE PATIO CLEANER OVER AREAS WITH PROTRUDING OBJECTS SUCH AS LARGE COBBLE STONES OR KERB STONES (fig. 1).



Do not scrub the floor when using the patio cleaner.



Do not put your fingers or feet under the patio cleaner while it is operating! (fig. 2).



The use of non-original spare parts and any other spare parts not specifically intended for the model in question is prohibited. All modifications to the appliance are prohibited.

Technical Information

Intended use

- This product has been designed for individual use for the cleaning of flat surfaces such as concrete floors & slabs, stone tiles, walls & timber decking.
- Intake water temperature: see data plate on your pressure washer.
- Intake water pressure: Max 10 bar, Min 1 bar.
- Operating ambient temperature: above 0°C.

Improper use

- This product shall not be used by children. Children should be supervised to ensure that they do not play with it.

This product can be used by people with reduced physical, sensory or mental capabilities or lack of experience and knowledge if they have been given supervision or instruction concerning use of the product in a safe way and understand the hazards involved.

Use by unskilled persons or those who have not read and understood the instructions in the manual is forbidden.

Installation

Assembly



Caution - Danger ! All installation and assembly operations must be performed with the pressure washer disconnected from the mains power supply.

- Remove from packaging and fold hinged arm into the correct position.
- Ensure that the pin 'X' is facing downwards when using the patio cleaner on floors and decking (Fig 3).
- Push patio cleaner onto the lance extension until it clicks in place (fig.4) and connect to the pressure washer gun.

Using Your Patio cleaner

Cleaning pressure

Cleaning pressure is adjusted by twisting the grip as shown in fig 5. This moves the nozzles closer to or further away from the surface being cleaned.

- For hard surfaces such as concrete & stone, twist the grip anti-clockwise so that the red indicator is shown near to the setting **HARD**
- For surfaces such as wooden decking twist the grip clockwise so that the red indicator is shown near to the setting **SOFT**.

Cleaning floors & decking

- Before using the patio cleaner, ensure that the surface to be cleaned is swept clear of debris to avoid damaging the underside of the unit.
- Position the patio cleaner on the surface to be cleaned.
- Start the pressure washer as described in the pressure washer instructions.
- Slowly move the patio cleaner over the surface. Try a slow sweeping motion back and forth or left and right to get the best cleaning effect. (fig.6).
- Do not scrub the surface! If the surface being

cleaned is very dirty, you may need to repeat the operation.


Cleaning Walls

- Before using the patio cleaner, ensure that the surface to be cleaned is swept clear of debris to avoid damaging to the underside of the unit.
- Position the patio cleaner on the surface to be cleaned by holding the gun in one hand and holding the patio cleaner handle in the other (fig.7).
- Start the pressure washer as described in the pressure washer instructions.
- Slowly move the patio cleaner over the surface. Try a slow sweeping motion back and forth or left and right to get the best cleaning effect.
- Do not scrub the surface! If the surface being cleaned is very dirty, you may need to repeat the operation.

Storage

- Switch the appliance off (OFF/0).
- Remove the plug from the socket.
- Turn off the water supply tap.
- Discharge the residual pressure from the gun by pressing the trigger, until all the water has come out of the nozzle.
- Remove the patio cleaner from the gun by pressing the red release button and pulling the patio cleaner away.
- Rinse the underside of the patio cleaner. Allow to dry and store in a frost free place.

Maintenance

 **CAUTION - DANGER!** Always disconnect patio cleaner from the pressure washer gun before carrying out any work on the appliance.

Cleaning the nozzles

Disconnect the patio cleaner from the gun.

Remove any dirt deposits from the nozzles hole using the tool supplied with your pressure washer.

End-of-season storage

- Ensure there is no residual water left in the appliance and protect against frost.

Warranty

This Hozelock product is covered under guarantee to be free of defective parts and materials for a period of 2 years from the date of purchase, providing that the product is used for normal domestic purposes.

The guarantee runs for 2 years after purchase provided that;

- You have followed the installation and operating

instructions.

- You consult our helpline / your nearest service centre early enough for any problems to be put right (See details on page 29).

The guarantee covers materials, construction and conformity defects during the guarantee period, during which time the manufacturer will authorise the replacement or refund of a defective unit, at the point of purchase. This does not affect your statutory rights.

The guarantee does not cover defects caused by or resulting from:

- Incorrect use, abuse or neglect
- Trade, professional or hire use
- Failure to service and maintain the unit as specified in the user's manual
- Unauthorised repairs
- Use of non-original accessories/spare parts
- Frost – this machine and all accessories must be protected from frost
- Damaged caused by foreign objects, substances or accidents

Please keep your receipt as proof of purchase.

If your product is not working properly, please contact our helpline / your nearest service centre.

Service / Spare Parts

For product advice and spares please contact our helpline / your nearest service centre or visit:

www.hozelock.com.

(See details on page 29).



Hozelock Ltd.
Midpoint Park
Birmingham, B76 1AB. England

Tel: 01702 482 760

info@hozelock.com

www.hozelock.com

33610-000